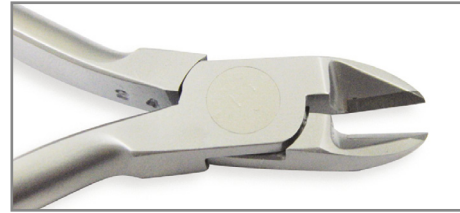


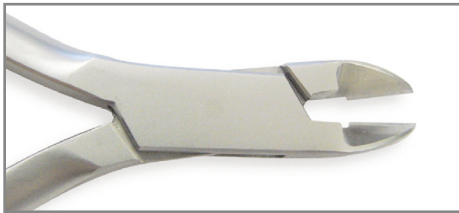
Perfect Line PL-001 inserti TC

Tronchese Miniature per legature Ø max .014"
Miniature Cutter TC insert light ligature and wire Ø max .014"



Perfect Line PL-020 inserti TC

Tronchese per legature Ø max .020"
Ligature cutter TC insert hard wire Ø max .020"



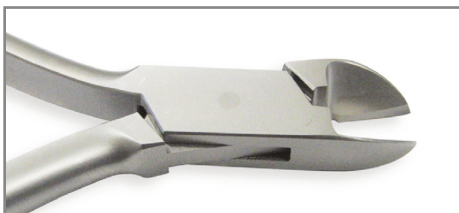
Perfect Line PL-002 inserti TC

Tronchese Miniature per legature Ø max .014", angolata 15°
Miniature Cutter TC insert light ligature and wire Ø max .014",
angled 15°



Perfect Line PL-040 inserti TC

Tronchese Distale con trattenuta filo Ø max .021" x .025"
Distal end cutter, safety hold TC Ø max .021" x .025"



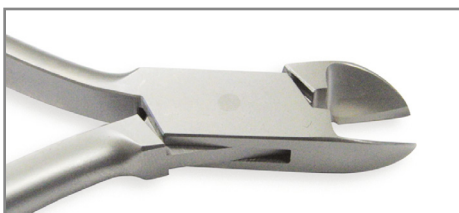
Perfect Line PL-010 inserti TC

Tronchese per filo duro Ø max .028"
Hard wire cutter TC with cut angle Ø max .028"



Perfect Line PL-045 inserti TC

Tronchese Distale con trattenuta filo **MANICO LUNGO** Ø max .021"x.025"
Distal end cutter safety hold TC Ø max .021"x.025" **LONG HANDLE**



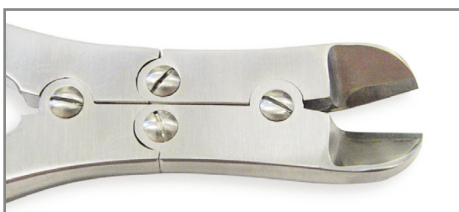
Perfect Line PL-011 inserti TC

Tronchese per filo duro Ø max .028", angolata 15°
Hard wire cutter TC with cut angle Ø max .028", angled 15°



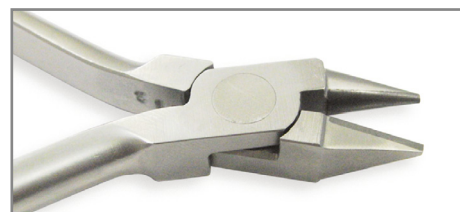
Perfect Line PL-080

Pinza di Adams Ø max .028"
Adam's plier Ø max .028"



Perfect Line PL-015

Tronchese Heavy-Duty Cutter Ø max .042"
Heavy-Duty cutter hard wire Ø max .042"



Perfect Line PL-090

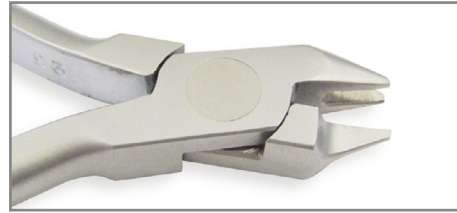
Pinza Angle a becco di uccello **CORTA**, Ø max .028"
Bird Beak plier Angle **SHORT**, Ø max .028"

P



Perfect Line PL-100

Pinza Angle a becco di uccello **LUNGA**, Ø max .028"
*Bird Beak plier Angle **LONG**, Ø max .028"*



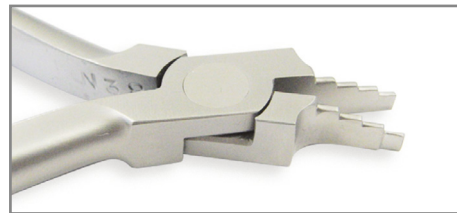
Perfect Line PL-145

Pinza di Aderer a 3 becchi Ø max .024", **PUNTA CORTA**
*Aderer plier 3 beaks **SHORT TIP**, Ø max .024"*



Perfect Line PL-110

Pinza a becco di uccello Ø max 0.24"
Bird Beak plier Ø max 0.24"



Perfect Line PL-150

Pinza di Nance Ø max .028"
Nance plier Ø max .028"



Perfect Line PL-120

Pinza a becco di uccello **CORTA**, Ø max .028"
*Bird Beak plier **SHORT**, Ø max .028"*



Perfect Line PL-160

Pinza Tweed, Ø max .021" x .028" **PUNTA LUNGA**
*Tweed plier **LONG TIP**, Ø max .021" x .028"*



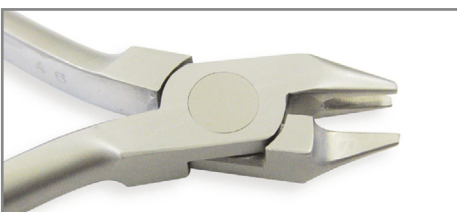
Perfect Line PL-125

Pinza concava / convessa a becchi stretti Ø max .016"
Concave / convex plier with narrow beaks Ø max .016"



Perfect Line PL-165

Pinza Tweed, Ø max .021" x .028" **PUNTA CORTA**
*Tweed plier **SHORT TIP**, Ø max .021" x .028"*



Perfect Line PL-140

Pinza di Aderer a 3 becchi Ø max .024" (mm 120), **PUNTA LUNGA**
*Aderer plier 3 beaks **LONG TIP**, Ø max .024" (mm 120)*



Perfect Line PL-170

Pinza per archi linguali Ø max .028"
Lingual arch plier Ø max .028"

■ Merce disponibile / Goods available
 ■ Merce a richiesta / Goods on request



Perfect Line PL-175

Pinza di Nance per formare ganci di Adams e piccoli stop da laboratorio
Laboratory Adams clasp forming plier Nance style



Perfect Line PL-220

Pinza togli brackets, **PUNTA STRETTA**
Brackets remover plier, NARROW TIP



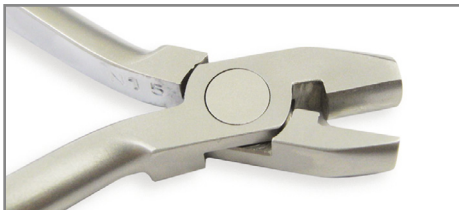
Perfect Line PL-180

Pinza De la Rosa concava / convessa, Ø max .020"
BECCO CON SCANALATURE
De la Rosa plier concave / convex, Ø max .020"



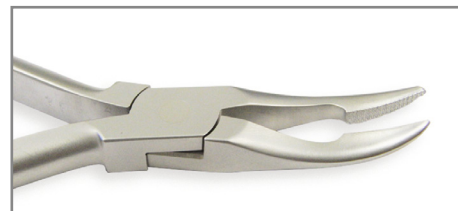
Perfect Line PL-225

Pinza togli brackets **CURVA**
Brackets remover plier CURVED



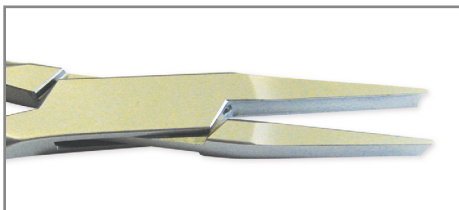
Perfect Line PL-190

Pinza De la Rosa concava / convessa, Ø max .020" **BECCO LISCIO**
De la Rosa plier concave / convex smooth beaks Ø max .020"



Perfect Line PL-250

Pinza Weingart Ø max .020"
Weingart plier Ø max .020"



Perfect Line PL-195

Pinza di Hollow Chop, concava / convessa
Concave / convex, Hollow Chop Plier



Perfect Line PL-265

Pinza di How curva Ø max .028", **PUNTA CORTA**
How curved plier SHORT TIP, Ø max .028"



Perfect Line PL-200

Pinza togli bande
Band remover plier with pads



Perfect Line PL-275

Pinza di How dritta Ø max .028", **PUNTA CORTA**
How straight plier SHORT TIP, Ø max .028"



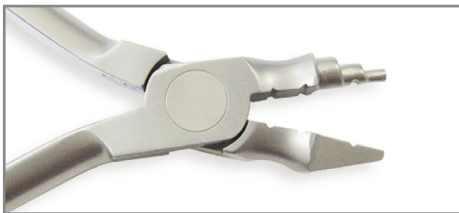
Perfect Line PL-290

Pinza per Omega Loop Ø max .028"
Omega Loop plier Ø max .028"



Perfect Line PL-360

Pinza per separatori
Separator plier



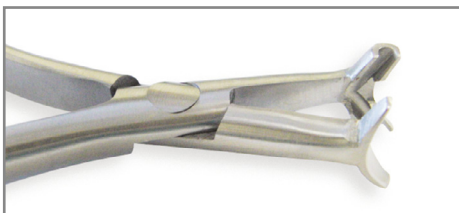
Perfect Line PL-300

Pinzetta di Young Ø max .020"
Young plier Ø max .020"



Perfect Line PL-370

Strumento per la piegatura distale degli archi Ø max .022"
Distal plier for arches Ø max .022"



Perfect Line PL-330

Pinza per formare angoli retti su fili in nickel titanio e acciaio Ø max .028"
Plier for right angles (Ni-Ti and steel wires) Ø max .028"



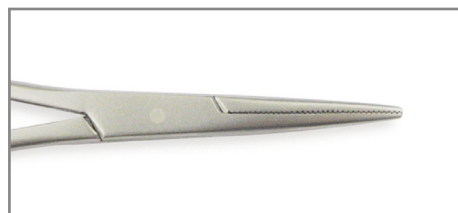
Perfect Line PL-510

Pinza Universale
Universal plier (classic)



Perfect Line PL-340

Pinza Jarabak Ø max .024"
Jarabak plier Ø max .024"



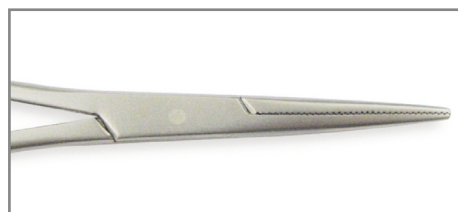
Perfect Line PL-580

Pinza di Mathieu per legature
Mathieu ligature positioner



Perfect Line PL-350

Pinza per formare stop a "V", Ø max .024"
Plier for "V" stop Ø max .024"



Perfect Line PL-585

Pinza di Mathieu per legature - PUNTA LUNGA
Mathieu ligature positioner - LONG TIP

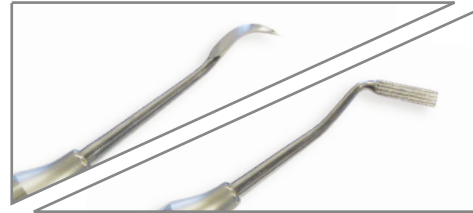


■ Merce disponibile / Goods available
■ Merce a richiesta / Goods on request



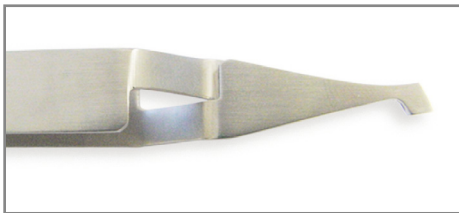
Perfect Line PL-633

Pinza per Grippare ganci chirurgici
Surgical hook Crimping Plier



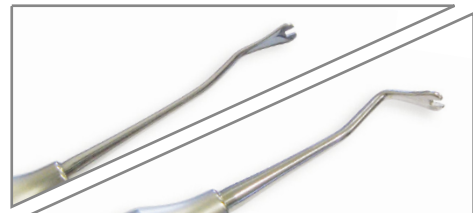
Perfect Line PL-690

Strumento di utilità
Utility instrument



Perfect Line PL-640

Pinzetta dritta per attacchi
Brackets straight plier



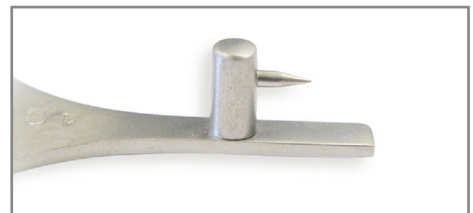
Perfect Line PL-700

Direzionatore per legature
Orthodontic instrument for ligatures



Perfect Line PL-650

Mosquito
Mosquito Hemostat



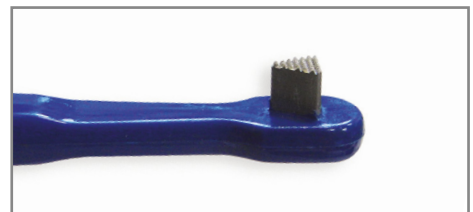
Perfect Line PL-740

Altimetro per brackets
Brackets altimeter



Perfect Line PL-660

Pinzetta per posizionare tubi
Tubes positioner plier



Perfect Line PL-750

Spingibande - Sterilizzabile a caldo
Heat sterilizable band carrier



Perfect Line PL-680

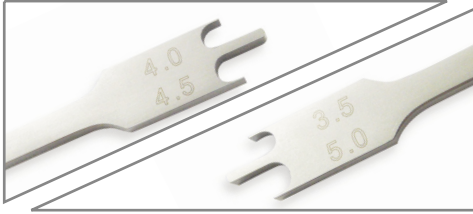
Applicatore per legature elastiche
Elastic ligatures positioner



Perfect Line PL-755

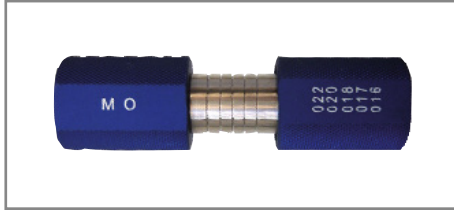
Spingibande - Sterilizzabile a caldo, (puno di contatto in teflon)
Heat sterilizable band carrier, (Teflon contact point)

■ Merce disponibile / Goods available
■ Merce a richiesta / Goods on request



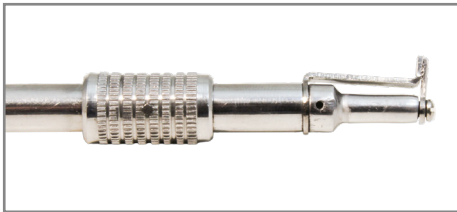
Perfect Line PL-780 / PL-785

Altimetro per brackets (Alluminio) / *Altimeter for brackets (Alluminiumn)*
 Ø max .018" (PL-780) - Ø max .022" (PL-785)



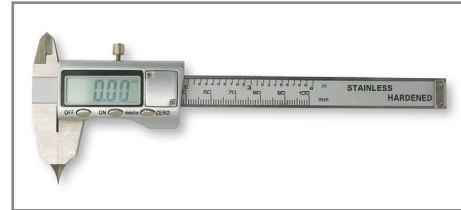
Perfect Line AFTR200

Torretta per formare archi, Torque O
Arch forming Turret, without Torque



Perfect Line PL-790

Strumento per posizionare brackets e tubi
Posterior bond placer



Perfect Line DIGICALIP

Calibro Digitale
Digital Gauge



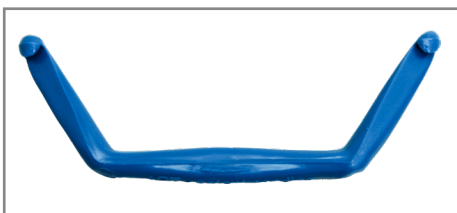
Perfect Line PL-810

Calibro Digitale
Digital Gauge



Perfect Line ZDGL10

Altimetro con graffite, misure 3.5 - 4 - 4.5 - 5 mm
Zand Gauge, measures 3.5 - 4 - 4.5 - 5 mm



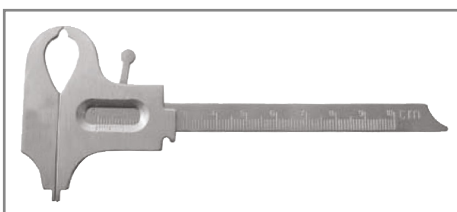
Perfect Line PL-830

Strumento per rimuovere allineatori
Aligner remover



Perfect Line DISCGD

Protezione per disco
Safety diamond discs



Perfect Line PL-870

Calibro Boley
Boley Gauge

■ Merce disponibile / Goods available
 ■ Merce a richiesta / Goods on request



Ergoplus EI-001 inserti TC

Mini troncese per legature e fili leggeri
Miniature Cutter TC insert light ligature and wire



Ergoplus EI-100

Pinza Angle a becco di uccello **LUNGA**
Bird Beak plier Angle LONG



Ergoplus EI-010

Troncese per filo duro Ø max .020"
Hard wire cutter TC with Ø max .020"



Ergoplus EI-110

Pinza a becco di uccello **LUNGA**
Bird Beak plier LONG



Ergoplus EI-040 inserti TC

Troncese distale con trattenuta filo
Distal cutter with hold wire



Ergoplus EI-120

Pinza a becco di uccello **CORTA**
Bird Beak plier SHORT



Ergoplus EI-080

Pinza di Adams
Adam's plier



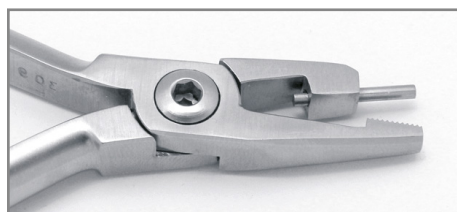
Ergoplus EI-125

Pinza Concava / Convessa a becchi stretti
Concave / convex plier with narrow beaks



Ergoplus EI-090

Pinza Angle a becco di uccello **CORTA**
Bird Beak plier Angle SHORT



Ergoplus EI-130

Pinza Tweed per formare loop
Tweed's plier for loop



Ergoplus EI-140

Pinza di Aderer a 3 becchi
Aderer plier 3 beaks



Ergoplus EI-190

Pinza de la Rosa Concava / Convessa
De la Rosa plier concave / convex



Ergoplus EI-150

Pinza di Nance per formare anse
Nance plier for dimpling



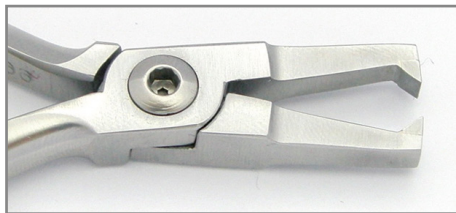
Ergoplus EI-200

Pinza toglie bande, punta in teflon
Band remover plier with pads, teflon tip



Ergoplus EI-160

Pinza Tweed per formare archi, **PUNTA LUNGA** 10mm
Tweed pliers **LONG TIP** for arches, 10mm



Ergoplus EI-220

Pinza toglie brackets, **PUNTA STRETTA**
Brackets remove plier **NARROW TIP**



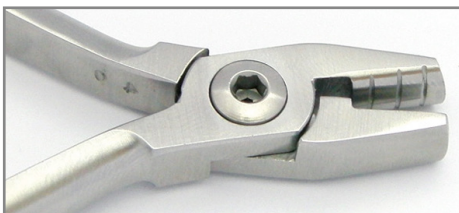
Ergoplus EI-170

Pinza per archi linguali
Lingual arch plier



Ergoplus EI-250

Pinza Weingart
Weingart Plier



Ergoplus EI-180

Pinza de la Rosa per formare e contornare archi
De la Rosa plier for arches shaping and contouring



Ergoplus EI-265

Pinza di How curva, **PUNTA SMALL**
How curved plier, **SMALL TIP**

■ Merce disponibile / Goods available
■ Merce a richiesta / Goods on request



Ergoplus EI-275

Pinza di How curva, **PUNTA SMALL**
How curved plier, **SMALL TIP**



Ergoplus EI-350

Pinza per formare stop simmetrici a "V"
Plier for "V" stop



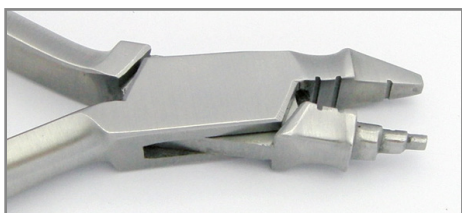
Ergoplus EI-290

Pinza per Omega Loop a torretta
Omega Loop plier



Ergoplus EI-360

Pinza per separatori radiopachi
Radiopaque Separator plier



Ergoplus EI-300

Pinzetta di Yang
Yang plier



Ergoplus EI-580

Pinza di Mathieu, posizionamento legature
Mathieu ligature positioner



Ergoplus EI-330

Pinza per formare angoli retti su fili Ni-Ti e Acciaio
Plier for right angles (Ni-Ti Stainless Steel)



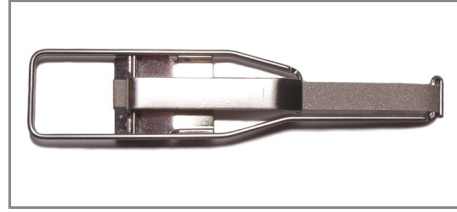
Ergoplus EI-633

Pinza per ganci chirurgici
Surgical Hoohs plier



Ergoplus EI-340

Pinza Jarabak per piegare fili con diametro sottile
Jarabak plier for thin wires bending



Ergoplus EI-820

Archetto per stripping
Stripping instrument